

Note: Shown with Optional Coastal Craftsman Exterior.

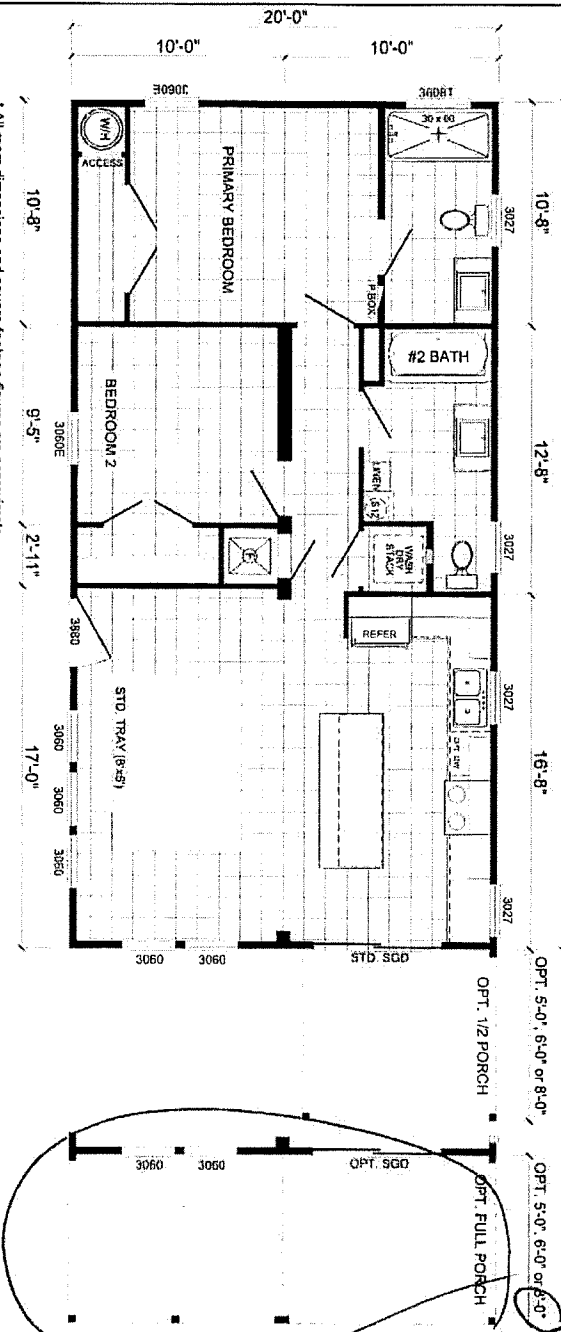
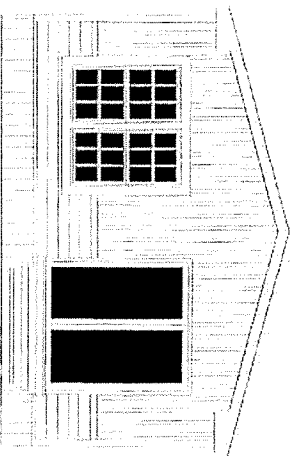
40'-0"

16'-8"

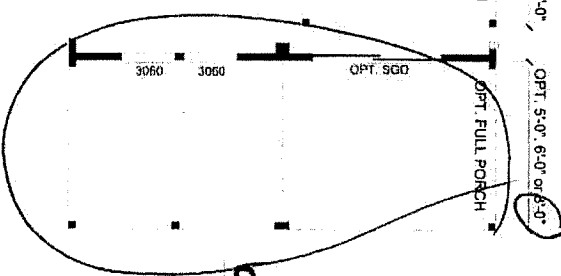
OPT. 5'-0" - 6'-0" or 8'-0"

OPT. 5'-0" - 6'-0" or 6'-0"

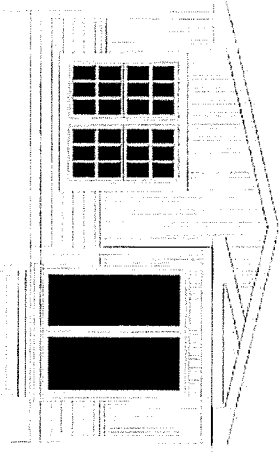
**STANDARD ELEVATION**



\* All room dimensions and square footage figures are approximate.  
 \* Scotbilt Homes reserves the right to modify the product offering at any time.



**OPT. FULL PORCH ELEVATION**



**OPT. 1/2 PORCH ELEVATION**

**Scotbilt**

MODEL #  
**2040461SSS**

UNIT SERIES  
**SCOTBLIT SPECIALTY**  
20 X 40 - 2BR 2 BATH

DATE  
12-19-2022  
VERSION  
A

AREA  
800 SQ. FT.

TOTAL SQUARE FOOTAGE  
800 SQ. FT.  
COVERED AREA  
0 SQ. FT.